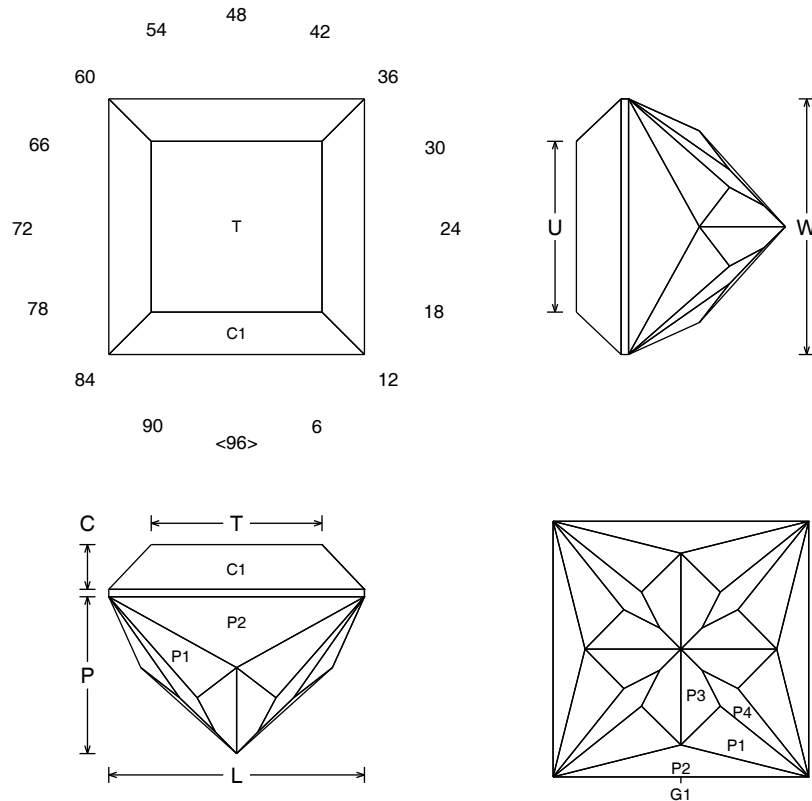


Easy Quad

AIB059

Andrew Brown - June 2019

| Design Information | |
|--------------------|--------------------------|
| Pavilion facets | 24 |
| Girdle facets | 4 |
| Crown facets | 4+1 |
| Total facets | 33 |
| Index gear | 96 |
| Symmetry | 4-fold mirror image |
| RI range | 1.54 to 2.16 |
| L/W = 1.000 | T/W = 0.668 |
| U/W = 0.575 | P/W = 0.622 |
| C/W = 0.115 | V/W ³ = 0.369 |



Pavilion

* A = RI 1.54 to 1.79 B = RI 1.70 to 2.14

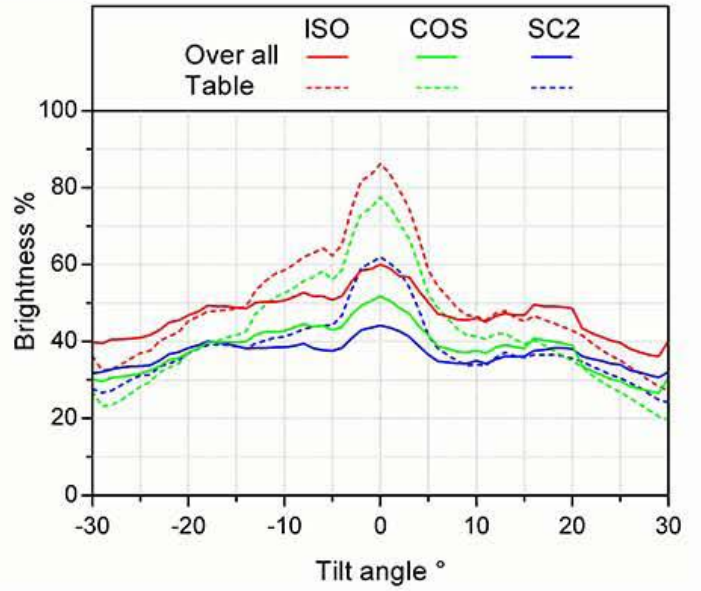
| Facets | A | B | Index | Instructions |
|--------|--------|--------|-------------------------|--------------------------|
| P1 | 47.89° | 48.30° | 04-20-28-44-52-68-76-92 | Form a TCP |
| G1 | 90.00° | 90.00° | 96-24-48-72 | Set stone size |
| P2 | 65.68° | 65.99° | 96-24-48-72 | Establish a level girdle |
| P3 | 42.16° | 42.58° | 02-22-26-46-50-70-74-94 | Meet P1, P2. Form FCP |
| P4 | 41.89° | 42.31° | 12-36-60-84 | Meet G1, P1, P2 |

Crown

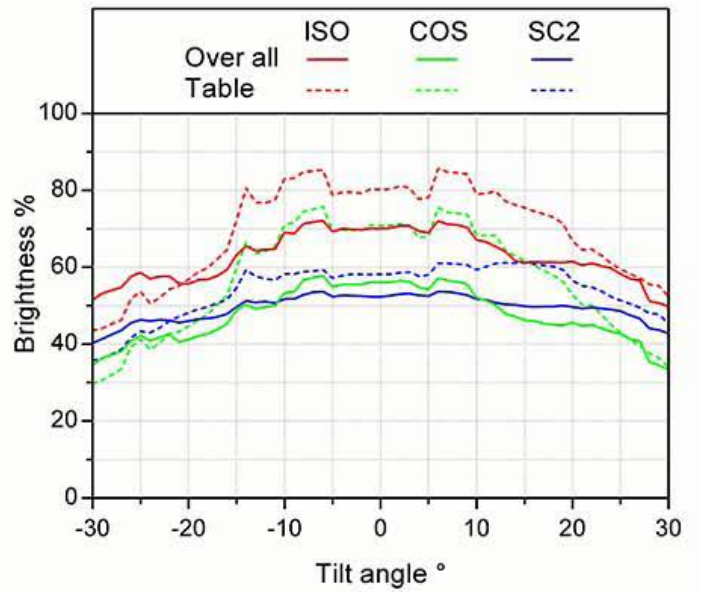
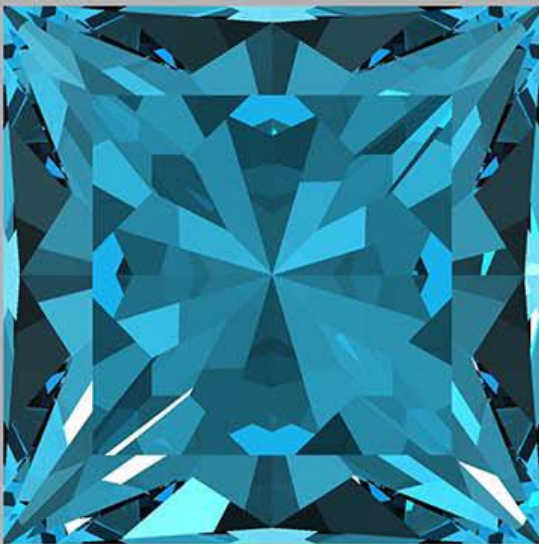
| Facets | A | B | Index | Instructions |
|--------|--------|--------|-------------|--|
| C1 | 46.50° | 34.81° | 96-24-48-72 | Establish girdle width |
| T | 0.00° | 0.00° | Table | Float in table to approximately 65% of width |

Visit www.facetingdesigns.com for more

RI = 1.54



RI = 1.76



RI = 2.16

